

Information continued

Children under the age of 8 years will not be admitted unless accompanied by, and under the constant supervision of, an adult swimming. Only two under 8 year olds per adult.

We recommend that non/weak swimmers wear armbands at all times around the pools.

Concession Rates are for adults aged 60 and over, Full time students (valid NUS card), Unemployed (Job seekers allowance), and doctors referrals only. Appropriate proof must be provided.

Payment can be accepted by cash, cheque (payable to The Priory Charity) and debit or credit card.

The Lido site is a no smoking area, and the consumption of alcohol is not allowed on the site.

For safety reasons the Lido has to be cleared if there is thunder and in these circumstances the pool has to remain closed for 30 minutes after the last thunder.



Please use Twitter to follow **@ware_lido** for the latest, up-to-date Ware Lido Information from the Lido Staff.

Ware Priory Lido
Priory Street
Ware, SG12 0DE
Tel 01920 460703

Ware Town Council
The Priory
Ware, SG12 9AL
Tel 01920 460316

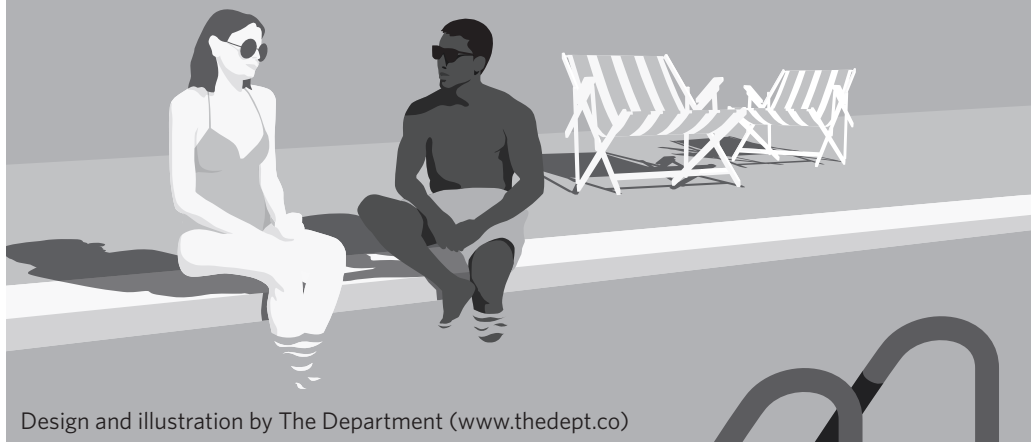
www.waretowncouncil.gov.uk



The Priory Charity: Reg Charity no 273022

Friends of Ware Lido

If you would like to join a local group of regular Lido users who support the Lido with a variety of duties and help, please contact us on FOWLIDO@gmail.com or [www.facebook.com/friendsofwarelido\(FOWL\).com](http://www.facebook.com/friendsofwarelido(FOWL).com), follow us on [twitter@warelido](https://twitter.com/warelido) or leave your details with the Lido reception staff.

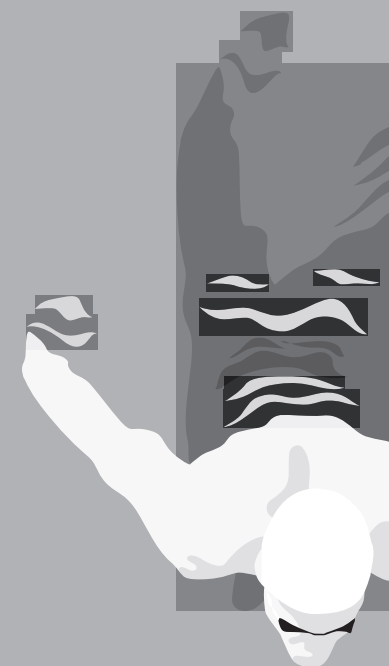


Design and illustration by The Department (www.thedept.co)



WARE
PRIORY
LIDO
SINCE 1934

Session times
and arrangements
2018



WARE PRIORY LIDO 2018 SEASON

Opening Hours

Early Season: 26th May to 30th June

Adult lunchtime swim	12.30 - 13.30
Open for all Weekdays	13.45 - 17.45
Open for all Weekends and Bank holidays	
Session One	13.45 - 15.30
Session Two	16.00 - 17.45

Quiet swimming sessions

Monday and Thursday evening	18.00 - 20.00
Wednesday evening	18.00 - 19.30

7th July, Ware Carnival Day

There will be special opening arrangements and events, please check.

Main Season: 1st July to 9 September

Open for all	10.00 - 12.15
Adult lunchtime swim	12.30 - 13.30
Open for all Weekdays	13.45 - 17.45
Open for all Weekends and Bank holidays	
Session One	13.45 - 15.30
Session Two	16.00 - 17.45

Quiet swimming sessions

Monday and Thursday evening	18.00 - 20.00
Wednesday evening	18.00 - 19.30

The pool and surroundings are cleared at the closing times stated above, last tickets are sold 30 minutes before this. A further 15 minutes are allowed to vacate the changing areas.

Early Morning Swimming, Aquafit and Other Activities all Season

There will be weekday early morning sessions, 06.00-08.00 all season, and some daytime aquafit and special holiday fun sessions during the season. Please check details during the season on the Ware Town Council website, on twitter @ware_lido or at the Lido.

Quiet Evening Sessions

Quiet evening sessions are intended primarily for adults wishing to swim lengths, but admission for juniors wishing to swim lengths will be allowed at Lido Manager's discretion. No jumping or ball games will be allowed.

Admission Charges

Adult	£5.00
Junior and Concession	£2.50
Lunchtime swim	£4.00
Family Tickets	
2 adults & 3 children	£15.00
2 adults & 2 children	£13.00
1 adult & 2 children	£9.00
1 adult & 1 child	£7.00
Swim Savers** (10 swims for the price of 8)	
Adult (over 16)	£40.00
Junior and Concession	£20.00
Season Tickets*	
Adult	£110.00
Junior	£50.00
Concession	£65.00
Early Morning Swim†	£5.00

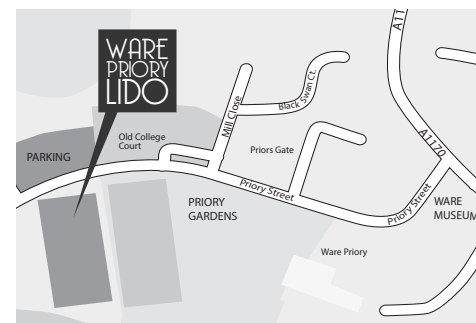
* Season Tickets can be bought at discounted prices (10% reduction) before May 25th from Ware Town Council Office in the Priory, Ware and are for named individuals.

** Swim Saver tickets are allocated to individuals for personal use.

† Prices for Early Morning Swims are included in the season ticket and swim saver offers.

Location

Ware Lido opened in 1934 and is one of the last open air pools in the area. It is situated close to Ware town centre on the west side of the Priory Grounds, next to the Skate Park and Play Area. The entrance is from Priory Street, where there is a small area of free car parking for Lido users. There are also bike racks, and the Lido is close to the River Lee cycle path. There is a public car park opposite the site, and the Lido is in walking distance of other Town Centre car parks.



Facilities

The main pool is approximately 30m long and there is a smaller learner pool (not available all sessions). Both pools are heated to around 80 deg F (26deg C). There are extensive paved and grassed areas around the pool with benches and tables which are great for sunbathing and picnics. There are also some sunbeds for hire. The facilities were extensively refurbished in 2016, generously funded by GlaxoSmithKline to mark their 300th Anniversary. For this season the equipment in the small children's play area has been refurbished by The Rotary Club of Hertford Shires.

The pool has male, female, and family changing rooms with lockers, showers, toilets and hair driers. The family changing area includes disabled facilities. There is access from the Lido to a refreshment kiosk that sells hot and cold food, drinks and ice cream. (The kiosk is managed independently, and opening hours may vary from those of the Lido.)

Special Events and Swimming Lessons

The Lido is available for private hire outside normal opening hours; it's a great place for a party, swimming gala or club fun swim, and there is now also a room available for use for catering or shelter. Lifeguards are provided and there is a barbeque area available. If you would like to use the Lido for any special event please contact the Lido Manager at the Town Council. Three courses of Swimming Lessons will be run during the school holidays.

These consist of five, 30 minute lessons on weekday mornings, and will run in the weeks beginning 30 July and 17th and 27 August. Application forms and more details are available at the Lido or on the Ware Town Council website.

Important Information

Pool Capacity and Afternoon Sessions

The Lido can get crowded in good weather and it is necessary to restrict entry to avoid overcrowding on safety grounds. Generally, the morning sessions tend to be less crowded than afternoons. To try to address problems with high demand and queuing in hot weather, this season, it is intended to split the afternoon opening at weekends and Bank holidays throughout the season into two 1hr 45 min sessions. The pool will be cleared between these sessions to allow more people to enjoy the facilities.

These arrangements will be monitored and may be altered at the discretion of the Lido Manager. The usual admission charges will still be applied.

There is no separate spectator rate as everyone benefits from the pool surroundings and facilities. Admission charges are payable for everyone entering the lido.

Juniors are 2 - 16 years of age. Proof of age may be required and when in question the adult rate will apply.

Children under 2 years free of charge.