

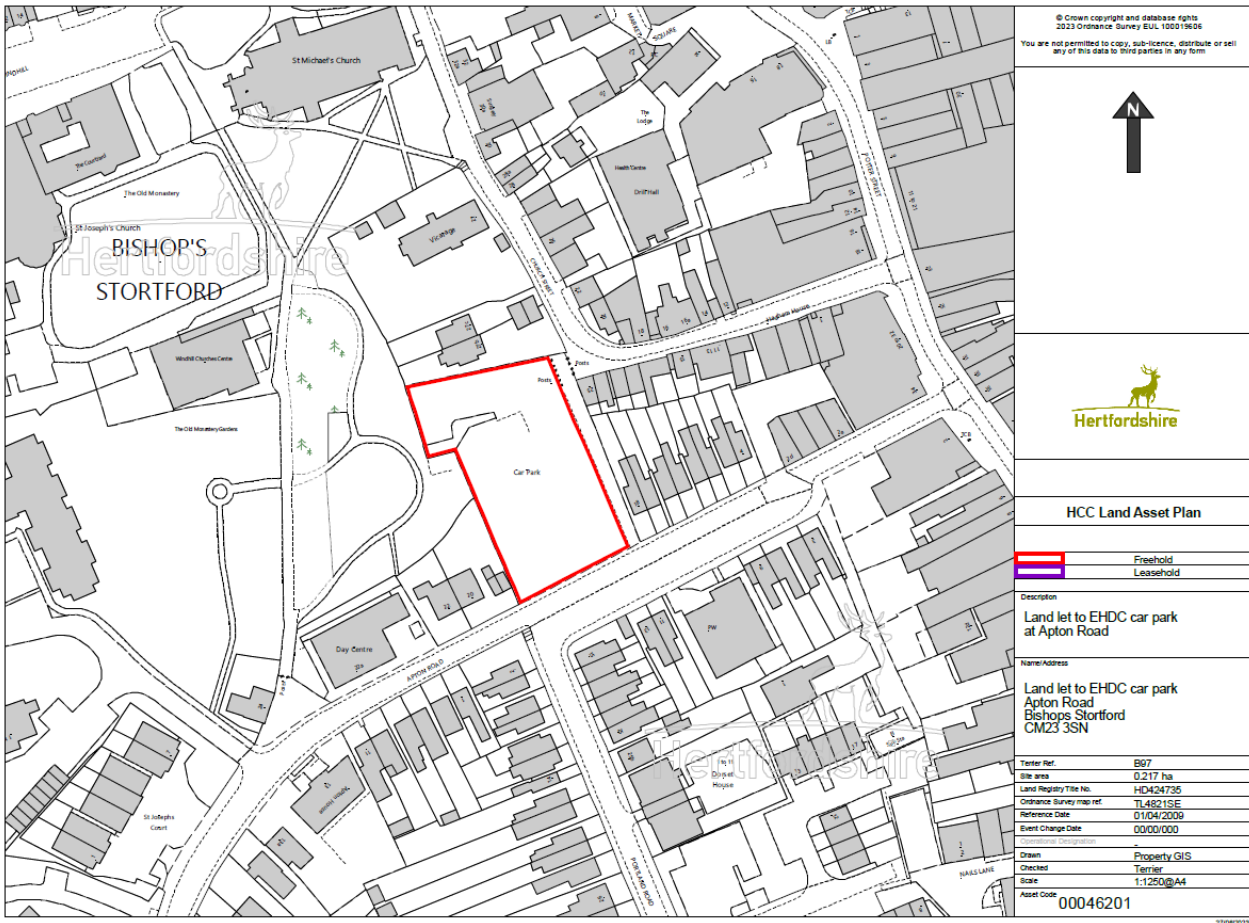
East Herts Call for Sites 2024

Table of Sites to be Promoted

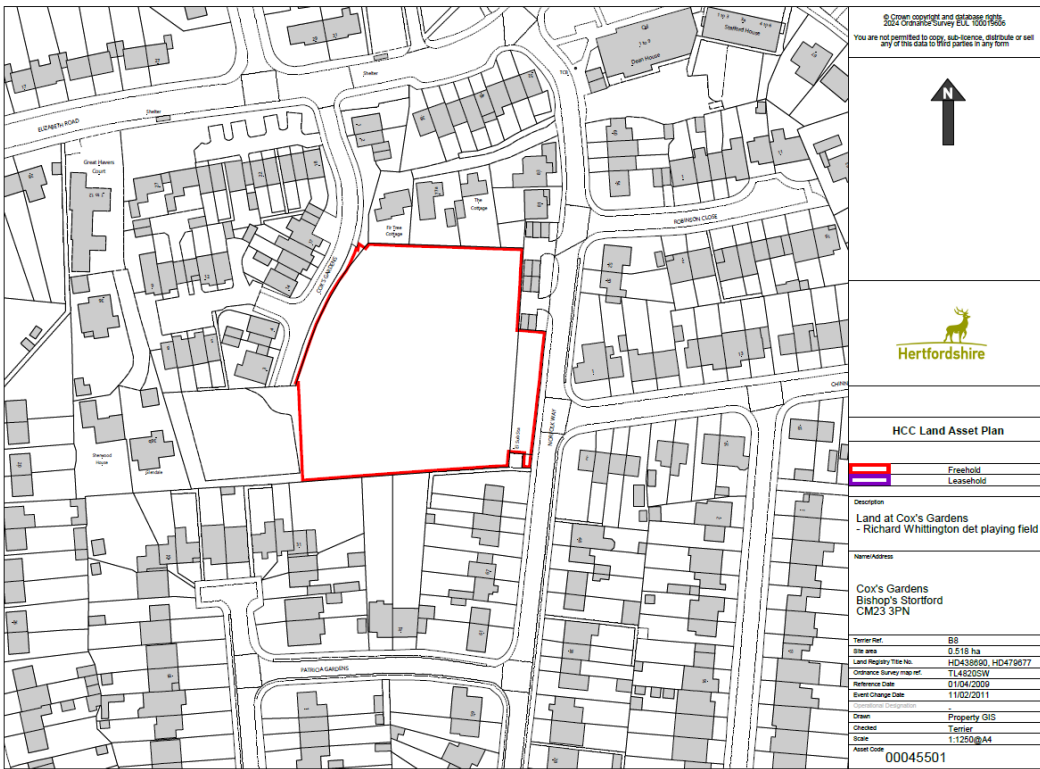
Site	Background (including any relevant local plan allocation)	Proposed Call for Sites Promotion
Bishop's Stortford - Apton Road car park	Car park let to East Herts Council.	Promote for mixed use to include service use and residential development.
Bishop's Stortford - Land at Cox's Gardens	Allocated as open space. Detached playing field for Richard Whittington Primary School which is no longer required.	Promote for residential development.
Buntingford - Land North of Freman College	Land acquired via S106 to extend playing fields for Freman College. Additional playing fields are not required for the school.	Promote for new SEND school.
Hertford - County Hall	Allocated for employment use.	Promote for mixed use to include residential development, commercial or community uses.
Hertford - Leahoe and West Street allotments	Scheme for residential development being prepared.	Promote for residential development.
Hertford Heath - Land at Amwell Place Farm	Rural Estate located in Green Belt. Two options: Site 1 Promote whole land holding. Site 2 Promote previously developed land only.	Site 1 Promote for mixed use to include residential development. Site 2 Promote for residential development.
Ware - Fanhams Hall Road playing field	Allocated as open space. Surrounded by WARE2, a mixed use allocation which includes housing, employment, schools and sports facilities.	Promote for service/community use, education or residential development.
Ware - Hertford Rugby Club, Hoe Lane	Located in Green Belt. Reliant on adjacent land coming forward as site is landlocked.	Promote for residential development.
Ware - Horticultural Nursery, Hoe Lane	Located in Green Belt on edge of Ware.	Promote for residential development.
Watton-at-Stone - Clappers Lane	Site has permission for a doctors surgery which is not required.	Promote for residential development.

Site Plans

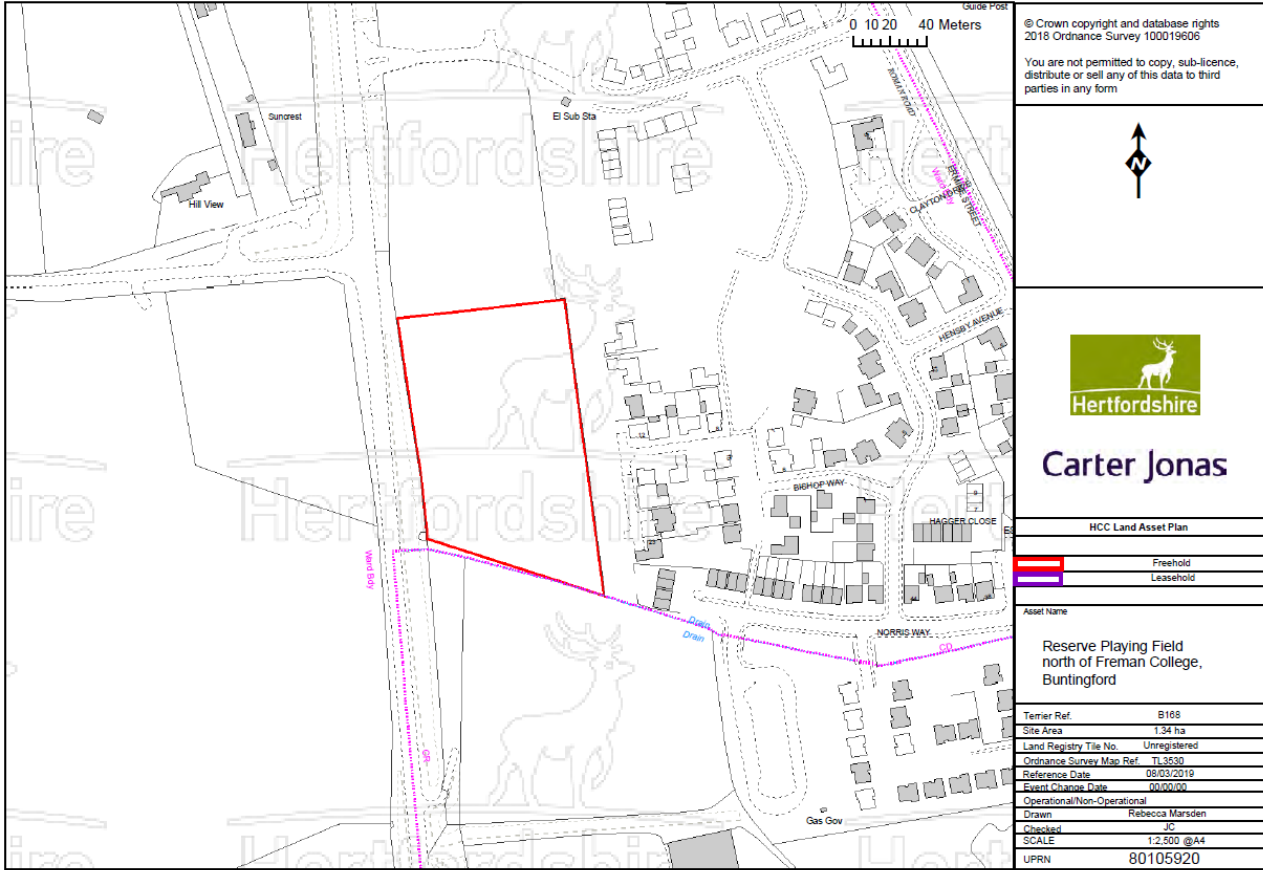
Bishop's Stortford - Apton Road car park



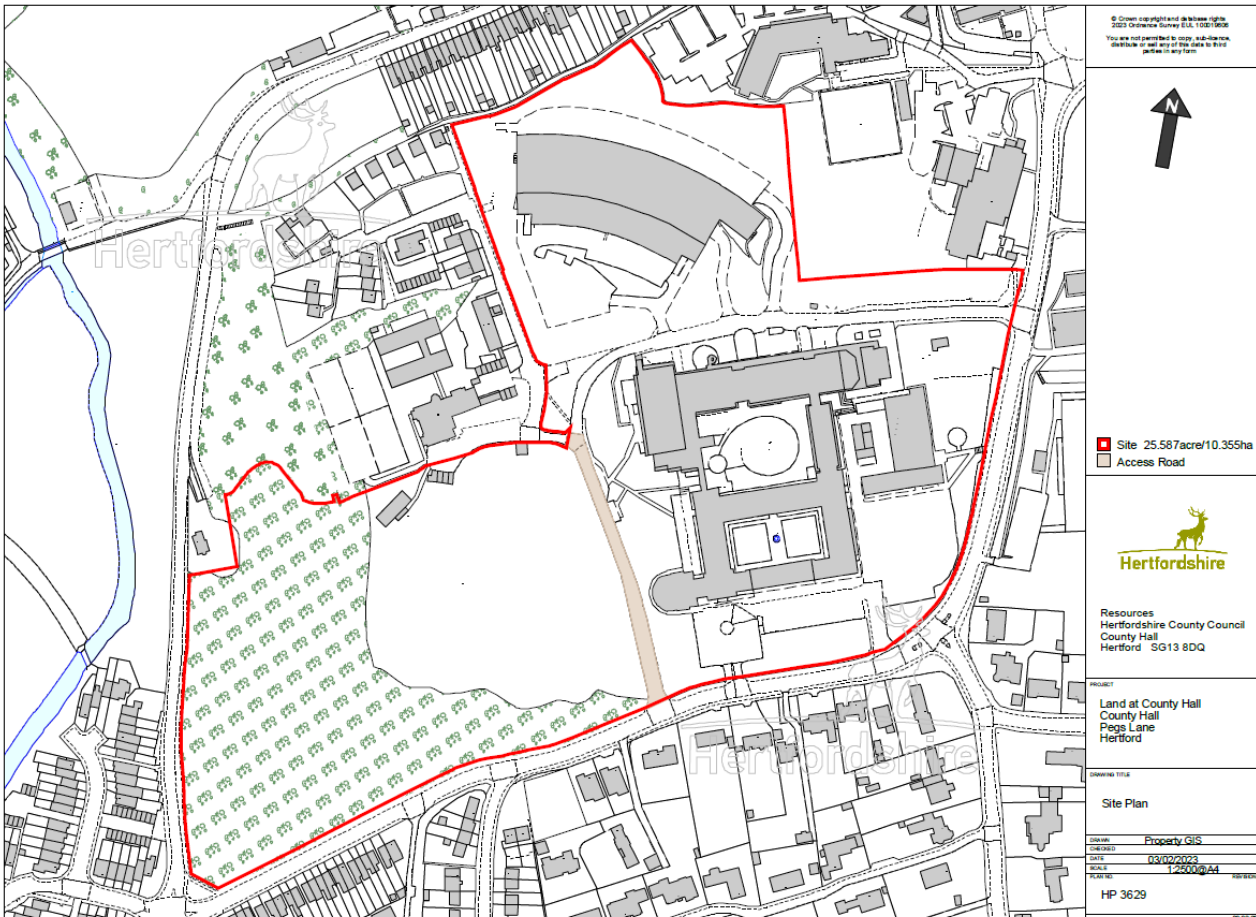
Bishop's Stortford - Land at Cox's Gardens



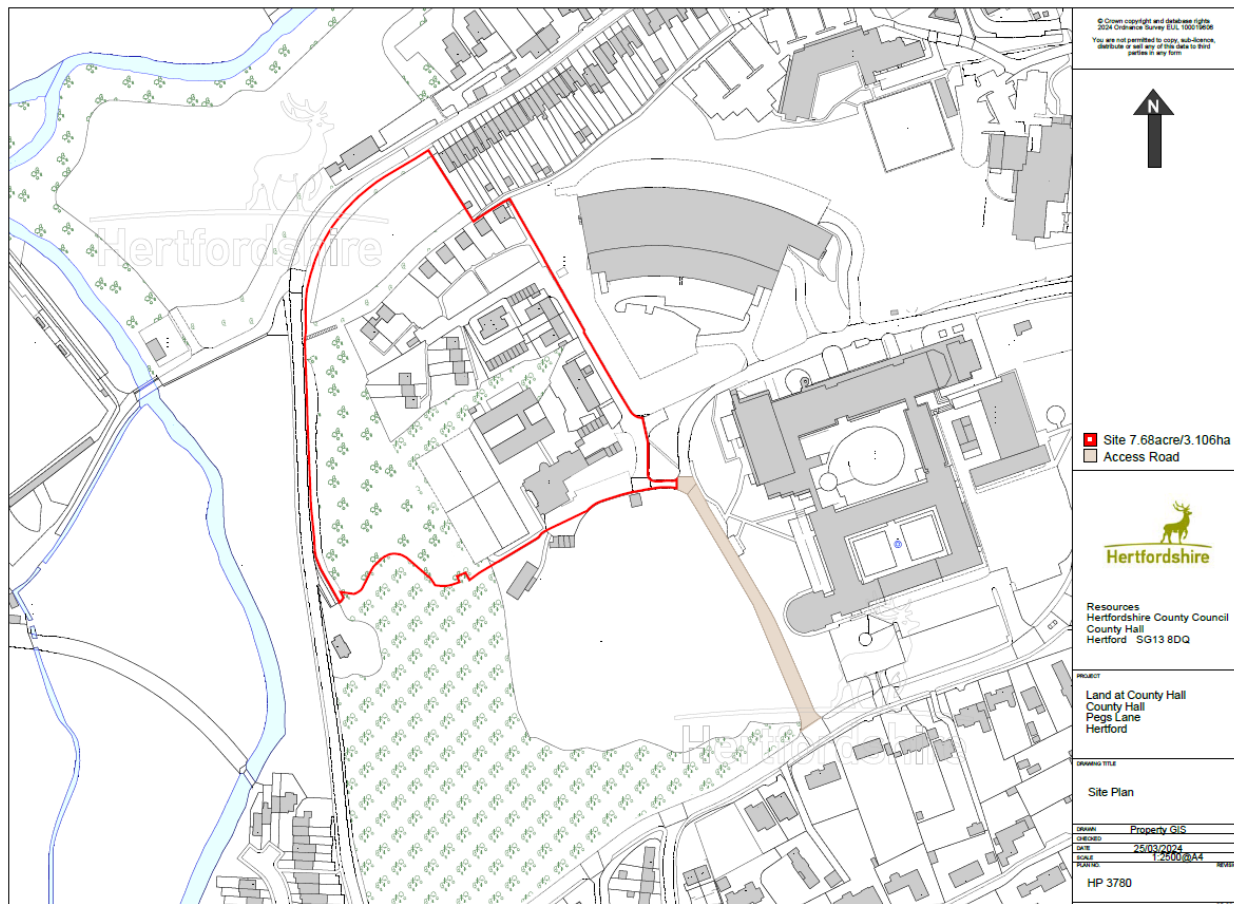
Buntingford - Land North of Freman College



Hertford - County Hall

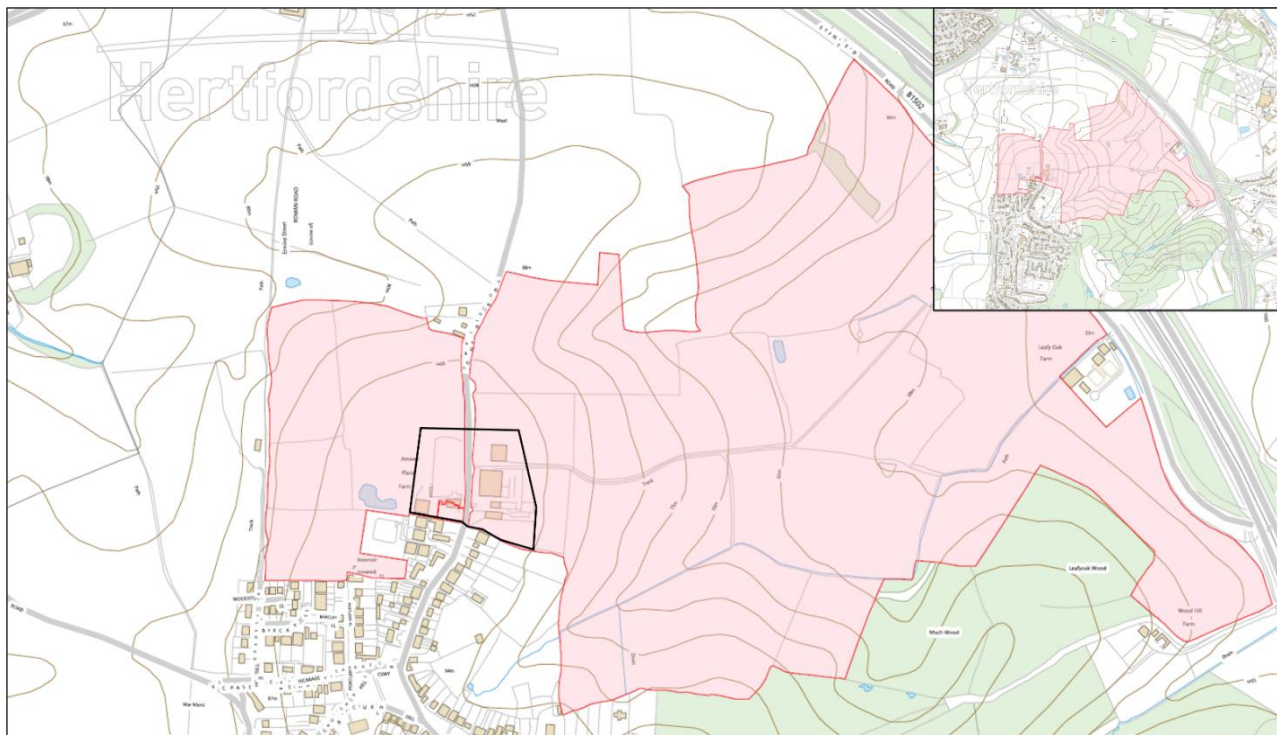


Hertford - Leahoe and West Street allotments

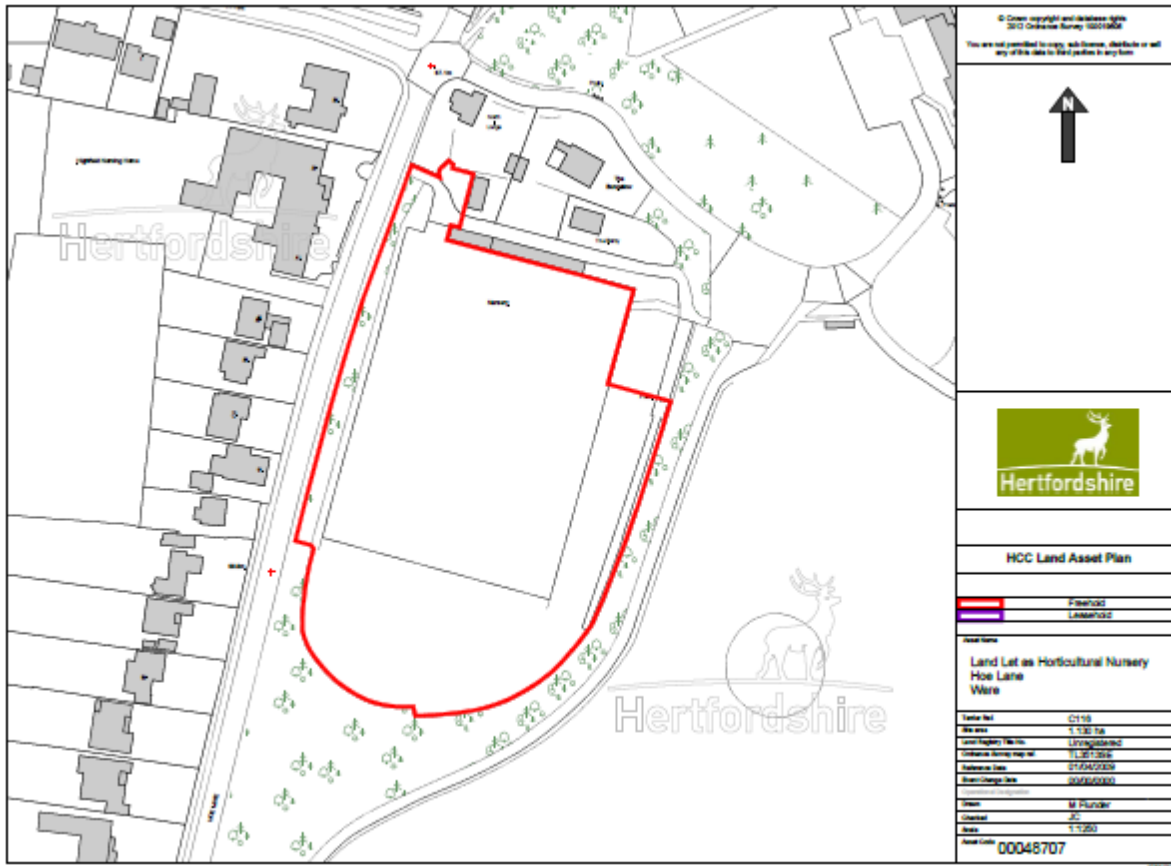


Hertford Heath - Land at Amwell Place Farm

Site 1 is shaded red with Site 2 outlined in black.



Ware - Horticultural Nursery, Hoe Lane



Watton-at-Stone - Clappers Lane

